





TABLE OF CONTENT



4 ABOUT US | OUR STORY

7 OUR SERVICES | OFFERINGS

5 CORPORATE VALUES | OUR JOURNEY

27 PROJECTS | EXECUTION

13 COMPETITIVE ADVANTAGE

28 CONTACT US | OUR HQ

14 PROJECT HIGHLIGHT

20 RECENT PROJECTS

ABOUT US | OUR STORY

Westpaq International LLC (WPQ) is a USA-based, Africa-focused company delivering global-standard Engineering, Procurement, Construction, Installation and Commissioning (EPCIC) solutions.

We provide efficient project and construction management for complex African projects, leveraging our partnerships, parent company support, and global network to deliver tailored solutions for Africa's energy industry

We provide services in our areas of operations through our subsidiaries



THE MISSION

To serve as a flexible Special Purpose Vehicle that partners with leading global and local organizations to deliver integrated engineering, procurement, construction, installation and commissioning services, leveraging expertise and collaborative networks to solve complex challenges in the Energy Industry across the USA and Africa.

CORPORATE VALUES | OUR JOURNEY

To be one of the most trusted integrated energy and technology services partner—recognized for delivering transformative, cross-disciplinary solutions that drive innovation, operational excellence, and sustainable impact in energy, and engineering sectors.

THE VISION



OUR SERVICES | OUR OFFERINGS

HOW WE WORK

We support clients across the energy sector by taking on the technical, operational and project work that keeps their assets performing. Our team handles reliability challenges, major construction needs, day-to-day field operations and specialised subsurface assessments. We move people, vessels and equipment offshore, and we source the materials that keep projects on track.

Our focus is straightforward: provide best global standard services, human resource and expertise, dependable support, strengthen asset performance and help our clients and operators run safely, cost effectively and efficiently in demanding environments.

CORE OFFERINGS

MANPOWER SUPPLY & PERSONNEL AUGMENTATION

We supply technical, administrative, HSE and expat personnel. We provide effective Project Management and Engineering Support services, we also deliver targeted training to support workforce performance

BROWNFIELD MODIFICATIONS INSTALLATIONS SERVICES

We handle Brownfield Modifications, Engineering, Procurement, Construction, Installation and Commissioning (EPCIC) to upgrade existing oil and gas platforms for new tie-backs, increase capacity and life extensions. We carry out structural modifications, piping integration for production/waterflood, module retrofitting, and upgrading electrical/instrumentation systems to facilitate subsea tie-ins

ENGINEERING, RESERVOIR & G&G STUDIES

We handle reserves and resource estimation, deliver engineering design, develop field development plans, and carry out full geology and geophysical evaluations



We provide end to end Project Management to ensure efficient oil and gas project execution, including the requisite support services; including equipment leasing, oil and gas production optimization and support, marine services, subsea services, procurement and installation of risers and umbilicals in collaboration with global technical partners





PROCUREMENTS

We support technical procurement for oil and Gas EPC Projects, subsea systems, pipeline systems, risers and umbilicals, and provide the safety equipment needed to keep operations secure.



MARINE SERVICES

We provide offshore vessel services, offshore logistics and support, equipment leasing, tug and barge operations, crew boat services, platform supply vessels, anchor-handling capability, and full offshore supply and towing services.



MAINTENANCE

We handle fabrication and construction, bolt tensioning and torqueing, corrosion monitoring and mapping, blasting, painting and specialist coating, structural repairs, topside facility maintenance,.



FACILITY ACCESS

We deliver rope access, scaffolding, tension netting and rigging services for safe and efficient work at height.



BROWNFIELD MODIFICATION

Delivering brownfield upgrades that improve and extend the performance of existing oil and gas facilities. The team handles engineering design, system changes and equipment integration while keeping operations running safely and efficiently.



OUR STRATEGIC PROJECT EXECUTION APPROACH

1 OPERATION STRUCTURE PARTNERS/ALLIANCE

We identify, tender, secure projects and shape effective business development decisions to provide top class global solutions at a local level through Cross Business Capability Integration, and application of innovative partnerships



2 WESTPAQ INTERNATIONAL PROJECT MANAGEMENT TEAM

- Assign project ownership & align the group PMT with international partners and local offices.
- Build the core expat team & local workforce required for the project.
- Finalize planning & scheduling for execution framework.
- Start procurement & construction activities based on project needs.

3 WESTPAQ LOCAL SUBSIDIARY

- Deploy a full integrated local and international team with the capacity to execute major projects.
- Set up a staffed yard for onshore fabrication when required.
- Mobilize project equipment and build local rental capability.
- Prepare in-country execution plans for major projects.



Utilizing Local Content /international collaboration As a competitive Advantage

OUR STRATEGIC APPROACH

- ❖ Utilizing Local Content/international collaboration As A competitive Advantage
- ❖ Increase capacity of local companies to participate in the execution of major projects in the Oil and Gas Sector as vehicles for international investment in line with the host country's National Content and Capacity Development vision
- ❖ Compliance with local content utilization as required by government policy for the socio-economic development of the host country to ensure optimization of National industry participation
- ❖ Use top talent with strong expertise, deep industry insight and solid local content qualifications.
- ❖ Provide global-standard solutions and practical methods for assessing opportunities.
- ❖ Benefits include access to projects in operational areas through local participation supported by partnerships between local and international stakeholders.
- ❖ Our business strategy focuses on delivering global-standard solutions in our operational areas through strong local and international collaboration.

COMPETITIVE ADVANTAGE



Leverage Africa's top-tier talent. ●

Build confidence for global partner engagement ●

Synergize the regional footprint ●

Deliver client-aligned technical solutions. ●

Mitigate local content regulatory risks ●

Implement world-class project management practices. ●

Comprehensive local and regulatory insight. ●

Local Content Compliance ●

HIGHLIGHT ON RECENTLY COMPLETED PROJECT

ALEN GAS MONETIZATION PROJECT

Multidiscipline team of global expertise integrated with a pool of qualified, experienced resources from across the West African region

1 SCHEDULE
April 2020 to March 2021

2 ESTIMATED MAN HOUR
250,000 MH

3 ESTIMATED COST
US\$50,000,000

4 PERSONNEL
250 (Local Personnel 130)

5 NO HARM DAYS
210 Days

HIGHLIGHT ON ONGOING PROJECT

BONGA NORTH PROJECT Topsides Modification (EPC 1)

The Bonga North 'BN' Project is a brownfield oil development located in the Gulf of Guinea, approximately 130km offshore in water depths ranging from 900m to 1300m. The field lies predominantly within OML 118 (originally OPL 212) operated by Shell Nigeria Exploration and Production Company Limited (SNEPCo).

The BN development comprises a Deepwater Subsea Production and Water Injection extension from the Bonga Main (BM) FPSO tied back through new SURF infrastructure on the West Side of the existing BM FPSO. BN EPC-1. The Topsides Modification will enable the infrastructure and equipment upgrade for the production, storage and offloading of additional 120,000 Barrels of Oil Production



PROJECT PARTNERS



Site Visit to Bonga North



WESTPAC

WESTPAC

WESTPAC

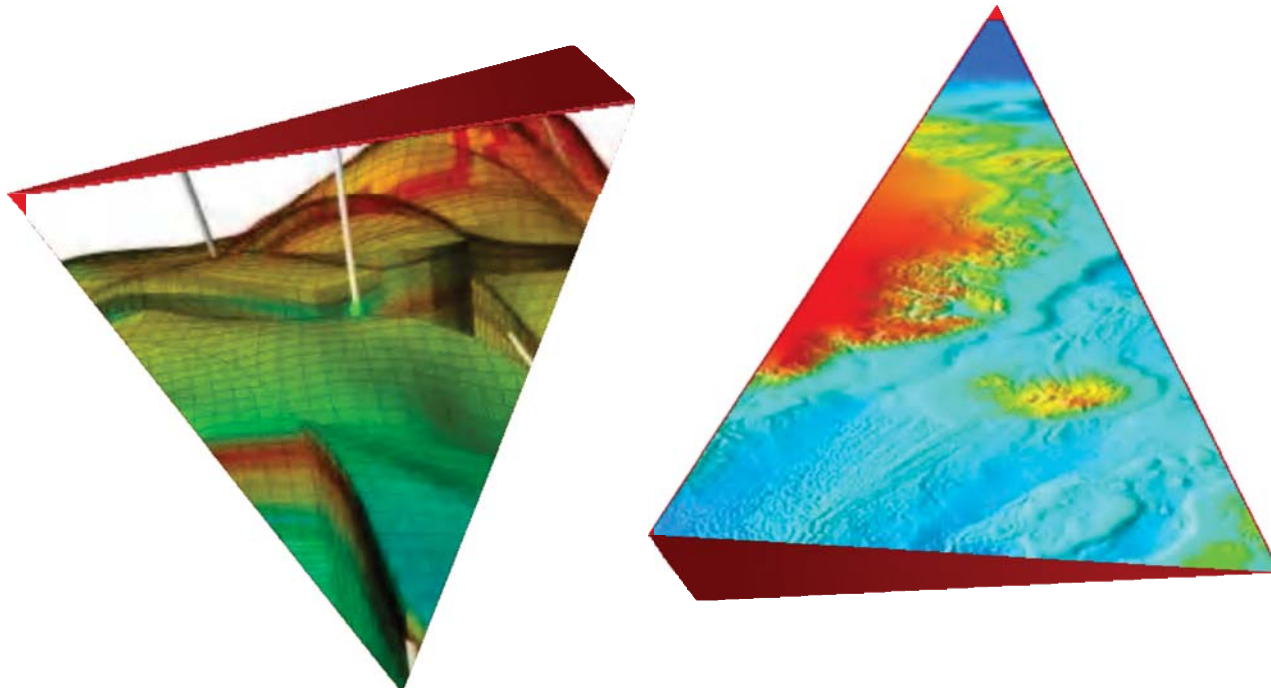
ONGOING PROJECT

PROVISION OF GEOSCIENCE AND PETROLEUM ENGINEERING FIELD EVALUATION SERVICES IN COLLABORATION WITH SUBSURFACE CONSULTANTS AND ASSOCIATES :

PROJECT SCOPE

- Provision of Geoscience and Petroleum Engineering Field Evaluations Services
- Provision of Subsurface Technical Consulting Services
- Operations Technical Consultant Services
- Provision of Wells Technical Quality Assurance Services
- Operations Technical Consultant Services

PROJECT PARTNERS



ONGOING PROJECT

CHEVRON

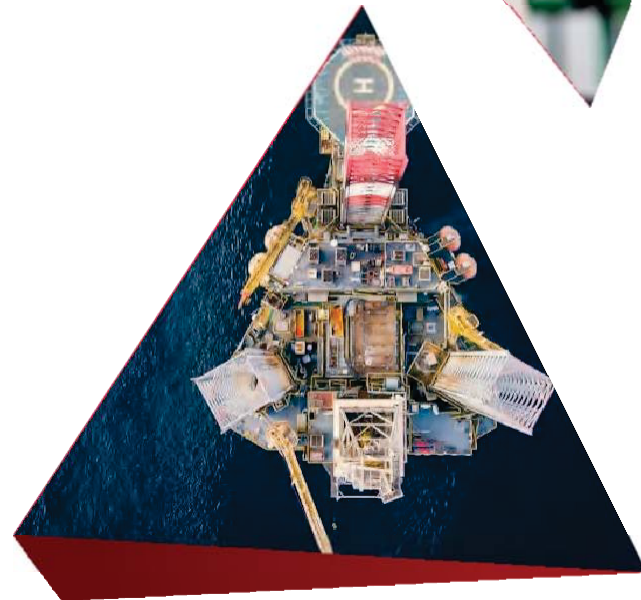
PROJECT SCOPE

- Staff Augmentation
- 3D Laser Scanning on Alen Platform
- Annual Lifeboat/Billy Pugh Inspections
- PLC/HMI Survey Study

PROJECT PARTNERS



CLIENT



Equipment installation on Site



RECENT PROJECTS

OUR TRACK RECORD OVERVIEW

WESTPAQ GROUP

PROJECT NAME	CLIENT	PROJECT DESCRIPTION
Operations Technical Consultancy Services	SEPLAT Energy Producing Nigeria Unlimited	Technical Consultancy Services to Ops and Tech Dept
Provision of Wells Technical Quality Assurance Services	SEPLAT Energy Producing Nigeria Unlimited	Provision of Wells Technical Quality Assurance
Subsurface Technical Consultancy Services	SEPLAT Energy Producing Nigeria Unlimited	Subsurface Technical Consultancy Services
Provision of Geoscience and Petroleum Engineering Field Evaluation Services	SEPLAT West Limited	Geoscience and Petroleum Engineering Field Evaluation Services
Pre-Planning, Alen Recovery Improvement Project	Chevron	Alen Recovery Improvement Project
Project Management - Bonga North Project - EPC-1	Shell Nigeria Exploration & Production Company	EPC - FPSO Topsides Modification
Detailed Engineering Design and Pre-Commissioning Engrn	Shell Nigeria Exploration & Production Company	EPC - FPSO Topsides Modification
FEED Consolidation, Early Engineering Bonga Topsides Modification	Shell Nigeria Exploration & Production Company	EPC - FPSO Topsides Modification
EPC on Bonga FPSO Topsides Modification	Shell Nigeria Exploration & Production Company	EPC - FPSO Topsides Modification
Maintenance, Engineering and Project Support Services	Shell Nigeria Exploration & Production Company	Subsea Intervention Services

RECENTLY COMPLETED PROJECTS

OUR TRACK RECORD OVERVIEW

WESTPAQ GROUP PROJECTS(CONT...)

PROJECT NAME	CLIENT	PROJECT DESCRIPTION
Maintenance, Engineering and Project Support Services	Shell Nigeria Exploration & Production Company	Subsea Intervention Services
Subsea Intervention, Engineering Support and Manpower Supply	Shell Nigeria Exploration & Production Company	Engineering Support Services, Manpower Supply
Maintenance, Engineering and Project Support Services	Shell Nigeria Exploration & Production Company	Maintenance, Engineering and Project Support Services
Engineering Support Services	Shell Nigeria Exploration & Production Company	Engineering Support Services, Manpower Supply
Commissioning of MEG Injection Skid PLC and HMI Updates	Chevron	Partnership with W-Industries
Supply and Installation of LokRing Fitting Connections	Chevron	Principal Contractor
Alen Platform 5-Years Lifeboat Inspection	Chevron	Partnership with Alexander Ryan
Provision of Manpower Support Services for Shorebase - Alen 2023 TAR	Chevron	Principal Contractor
Construction Management Support for Alen	Chevron	Principal Contractor
Automation Firmware Upgrade for TAR 2023	Chevron	Partnership With Intech Automation

RECENTLY COMPLETED PROJECTS

OUR TRACK RECORD OVERVIEW

WESTPAQ GROUP PROJECTS(CONT...)

PROJECT NAME	CLIENT	PROJECT DESCRIPTION
Replacement of Antennas and Transmitters (Model RTG-3940 and Technical Training	Mrathon Oil	Partnership with Intech Automation
Subsea Inspection	Chevron	Principal Contractor
Offshore Electrical & Instrumentation Maintenance Engineering Services	Mrathon Oil	Principal Contractor
Annual Lifeboat Inspection	Chevron	Principal Contractor
Platform Integrity Inspection Services	Chevron	Principal Contractor
FEED Evaluation for the Modification of Bonga Main FPSO	Shell Nigeria Exploration & Production Company	Executed with Engineering Partner
Engineering Planning & TAR Aseng FPSO	Chevron	Executed with EPC Partner
Field Services Support - E&I	Chevron	Principal Contractor
Host Facility Fabrication and Painting	Noble Energy (Chevron)	Principal Contractor

RECENTLY COMPLETED PROJECTS

OUR TRACK RECORD OVERVIEW

WESTPAQ GROUP PROJECTS(CONT...)

PROJECT NAME	CLIENT	PROJECT DESCRIPTION
Fabrication of Security Fence and Roof on Aseng FPSO	Chevron	Partnership with PES
Construction Material and Equipment Rental	Noble Energy (Chevron)	Principal Contractor
Engineering Consultancy Services for Piped Natural Gas & Power Infrastructure Dev Project	Lekki Free Zone Development Company	Principal Contractor
Integrated Control and Safety Systems Upgrade	Noble Energy (Chevron)	Partnership with CSE – W-Industries
Aseng FPSO HP3A Compressor Maintenance	Noble Energy (Chevron)	Partnership with PES
Offshore Air Compressor Installation Services	Noble Energy (Chevron)	Partnership with PES
Offshore Security Improvements	Noble Energy (Chevron)	Partnership with PES
Offshore Design Services	Noble Energy (Chevron)	With Engineering Partner
Offshore Mechanical and Structural Installation Services	Noble Energy (Chevron)	With PES

RECENTLY COMPLETED PROJECTS

OUR TRACK RECORD OVERVIEW

WESTPAQ GROUP PROJECTS(CONT...)

PROJECT NAME	CLIENT	PROJECT DESCRIPTION
Offshore Repair/Facilities Maintenance	Noble Energy (Chevron)	With PES
Procurement of Equipment and Tools for Alen TAR2020	Noble Energy (Chevron)	Principal Contractor
Integrated Project Planning, Alen Gas Monetization/Alen TAR2020	Noble Energy (Chevron)	With Milestone Project Services
E&I Services, Alen TAR (OPS)	Noble Energy (Chevron)	With EPC E&I Partners
Brownfield E&I Construction	Noble Energy (Chevron)	With CSE W-Industries
Alen Ops TAR2020	Noble Energy (Chevron)	With PES
Fabrication of CPP & WHP Air Compressor Tie-in Spool, Generator Filter Access platform (3 each), Stabilizer Recycle Piping, Diega Tieback Piping	Noble Energy (Chevron)	With PES
Alen Host Facility, Brownfield Modification, Construction & Hookup	Noble Energy (Chevron)	Principal Contractor, PES and W-Industries as subs
Development of Work Packs for Alen TAR2020	Noble Energy (Chevron)	With PES
Procurement of Pipes, Fittings, Flanges and Valves and Project Management	Noble Energy (Chevron)	Principal Contractor

RECENTLY COMPLETED PROJECTS

OUR TRACK RECORD OVERVIEW

STRATEGIC ALLIANCES/PARTNERS WITH SUBSISTING MSA'S/MOA's

PARTNERS	COUNTRY OF ORIGIN	SCOPE
Performance Energy Services	USA	General Mechanical Services -Structural, Piping, Equipment and Fabrication
UTC International	BRAZIL	EPC/Brownfield Modification and Maintenance
Cronus Technology Inc	USA	Engineering Services, Riser, Flow-lines, Pipeline Design
DOF Global Subsea offshore Solutions	NORWAY	Subsea Services, Marine Services/Management, Vessel Leasing
Offshore Design Services	USA	Design overboard Hung Scaffold for Alen Platform
MFXdoBrazil	BRAZIL	Manufacture of umbilical cables, high-pressure thermoplastic hoses,
EDT Offshore	Cyprus	Marine Equipment: Vessel Supply, Crew Boats, Floatel
CSE W-Industries	USA	General Electrical & Instrumentation Services
MTI Inc (Registered Distributor to Tectubi Raccordi, FAD Internaonal, Freudenberg	USA	Supply of Pipes, Fings and Flanges
Stranco & Safe Zone	USA	Torquing & Flange Management/Provision and Installation of PWE's

RECENTLY COMPLETED PROJECTS

OUR TRACK RECORD OVERVIEW

WITH STRATEGIC ALLIANCES/PARTNERS WITH SUBSISTING MSA'S (CONT)

SUBCONTRACTOR/PARTNER	COUNTRY OF ORIGIN	SOW
Trussco Inc. (Omni Environmental Services)	USA	Provision of Equipment and Qualified Personnel for Vessel(s) Opening, Vessel and Platform Cleaning and Inspection, Platform Integrity
DM Contractors	UK	Certified Scaffolding Crew
Future Piping Inc	USA	Supervision and Labor for Fibre-bond piping installation
APAVE	EQUATORIAL GUINEA	Equipment, Supervision and Labor for Blasting and Painting, Welding, Scaffolding and Offshore Training Services
Subsurface Consultants and Associates (SCA)	USA	Reservoir Engineering and G&G Services
Concrane	ITALY	Crane Rehabilitation
EDG Inc	USA	Engineering Services



CONTACT US



USA
1 Sugar Creek Center Blvd,
Suite 600
Sugar Land, TX 77478

EQUATORIAL GUINEA
Edificio Da Vinci,
Carretera Aeropuerto
KM5, Malabo II

NIGERIA
16th Floor, Azuri Office
Tower, Marina District,
Eko Atlantic City, Lagos.

United Kingdom
56 Gloucester Road, Suite 162
South Kensington,
London, SW7 7UB.



+1 346 391 5432

+240 555 702 512

+234 816 431 3788

+44 776 538 3331



info@westpaq.com



www.westpaq.com

